

kwic

Kwic is a family of lamps: floor lamp, suspension, ceiling or wall lamp. A semi-spherical blown glass diffuser contains the integrated LED light source and overlaps - in a decentralized position - with a circular painted aluminum disk, available in three different colors.

The applique is fixed to the wall or ceiling thanks to a metal box, to which the frame is welded. In the floor lamp the disk is fixed to a rod that sinks into a metal base.

In the suspension version, the steel cables are attached to a specially developed metal element. Its orientation can be changed simply by playing with the length of the support cables.

The Kwic lamps bring into the space an intense light, which radiates from the opaline white diffuser, and a delicate glow that filters through the back of the frame.

Kwic has a versatile personality: it conforms to multiple contexts and living styles. Depending on the location it can be a discrete presence or become a point of attraction in space.

Kwic è una famiglia di lampade, che si declina in piantana, sospensione, lampada a soffitto o a parete.

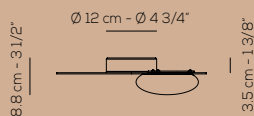
Un diffusore semi-sferico in vetro soffiato contiene la fonte luminosa a LED integrata e si sovrappone - in posizione decentrata - a un disco circolare in alluminio verniciato, disponibile in tre diversi colori.

L'applique si fissa a parete o a soffitto grazie a una scatola metallica, a cui viene saldata la montatura. Nella piantana il disco è fissato a un'asta che affonda all'interno di una base metallica. Nella versione a sospensione i cavi di acciaio si agganciano a un elemento metallico sviluppato ad hoc.

Il suo orientamento può essere variato semplicemente giocando con la lunghezza dei cavi di sostegno.

Le lampade Kwic portano nello spazio una luce intensa, che irradia dal diffusore bianco opalino e un lieve bagliore che filtra dal retro della montatura.

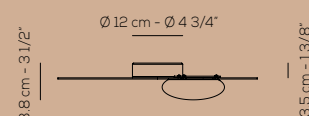
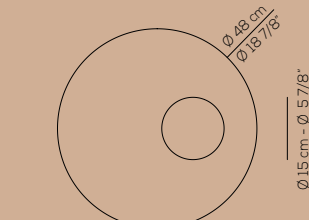
Kwic ha una personalità versatile: si sposa con molteplici contesti e stili abitativi. A seconda della collocazione può essere una presenza discreta o diventare punto di attrazione nello spazio.



Europe: PL KWIC 36
18W LED
CRI>90 - 3000K - diffused
~2151 lm ~119 lm/W
dimnable 0/1-10V

USA: UP KWIC 36
18W LED
CRI>90 - 3000K - diffused
~2151 lm ~119 lm/W
dimnable 0-10V

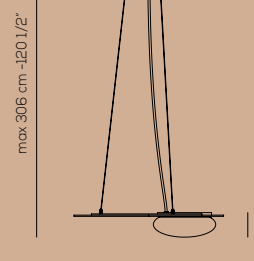
application: both as ceiling or wall lamp /
applicazione a soffitto o a parete



Europe: PL KWIC 48
18W LED
CRI>90 - 3000K - diffused
~2151 lm ~119 lm/W
dimnable 0/1-10V

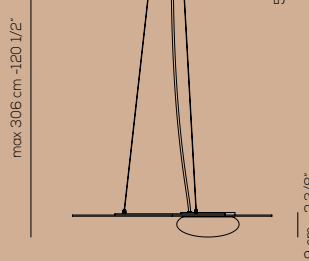
USA: UP KWIC 48
18W LED
CRI>90 - 3000K - diffused
~2151 lm ~119 lm/W
dimnable 0-10V

application: both as ceiling or wall lamp /
applicazione a soffitto o a parete



Europe: SP KWIC 36
18W LED
CRI>90 - 3000K - diffused
~2151 lm ~119 lm/W
dimnable 0/1-10V

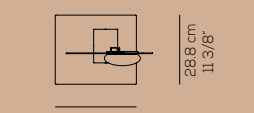
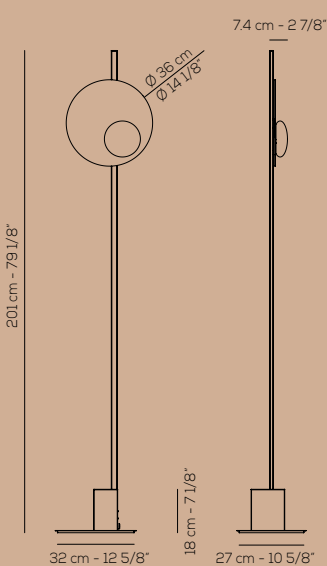
USA: US KWIC 36
18W LED
CRI>90 - 3000K - diffused
~2151 lm ~119 lm/W
dimnable 0-10V



Europe: SP KWIC 48
18W LED
CRI>90 - 3000K - diffused
~2151 lm ~119 lm/W
dimnable 0/1-10V

USA: US KWIC 48
18W LED
CRI>90 - 3000K - diffused
~2151 lm ~119 lm/W
dimnable 0-10V

application: both as ceiling or wall lamp /
applicazione a soffitto o a parete



Europe: PT KWIC 36
18W LED
CRI>90 - 3000K - diffused
~2151 lm ~119 lm/W
dimnable

USA: UT KWIC 36
18W LED
CRI>90 - 3000K - diffused
~2151 lm ~119 lm/W
dimnable

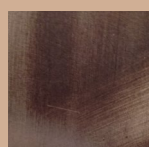
FINISHINGS FINITURE



Intense black
Nero intenso



Copper
Rame



Transparent bronze
Bronzo trasparente