

**SPBEL090**

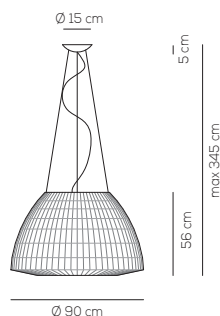
Design by Manuel Vivian

Collection consisting of suspended and ceiling lamps with a metal frame covered with strips of extra smooth flame-retardant pongé fabric. Available in several colours and sizes.

Typology: SUSPENDED

## Ratings

- E27
- Downlight and uplight
- Surface installation over holes
- Supply voltage ~220-240V
- Switch mode: on-off
- Steel frame
- Opalescent diffuser

**SP BEL 090**kg 13.5 m<sup>3</sup> 1.06

## Product code composition

BELL / diffusore INCLUSO, con illuminazione verso alto e basso / diffuser INCLUDED, with upward and downward lighting

Type	Article	Colours	Finish	Source
SP	BEL 090 E27	BC white	XX	E27 4 x Max 17.5W LED or 4 x Max 46W halogen
		BW warm white		
		GI gold yellow		
		NE black		
		RS red		

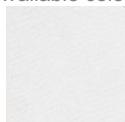
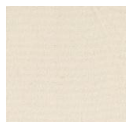
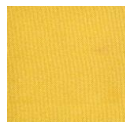
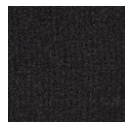
CE IP20 +LED 220-240VAc

example composition code SP BEL090E27 BW XX

Equivalent Sound Absorption Area (A) in m<sup>2</sup> per lamp

FREQUENCY	125 HZ	250 HZ	500 HZ	1000 HZ	2000 HZ	4000 HZ	8000 HZ	125-8000 HZ	500-2000 HZ
A	0,15	0,33	0,48	0,68	0,92	1,21	1,41	0,74	0,69

## Available colors

BC  
WhiteBW  
Warm whiteGI  
Gold yellowNE  
BlackRS  
Red

Altri colori disponibili su richiesta / Other colors available upon request.

SPBEL090E27 \_ \_ XX

CUSTOMER \_\_\_\_\_

NOTES \_\_\_\_\_

NOTICE: Luminous flux (lm) and efficacy (lm/W) for all LED luminaires is based on nominal ratings of the LED sources.  
Technical data could be subject to alteration without notice. Axo Light does not provide legal guarantee for the accuracy of this data sheet.