



SPSK1002

Design by Manuel Vivian

Collection of suspended lamps in flame-retardant TREVIRA®CS fabric (100% polyester Glow wire 960 °C), available in several sizes and colours. The fabric can also come in a double-layer version with an exterior black net fabric. A decorative inner lampshade (also printable with customized graphic) is available.

Typology: SUSPENDED

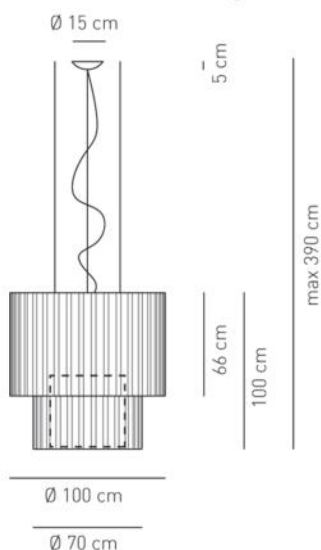
Ratings

- Built in **LED** module
- CCT 3000 K
- Downlight and uplight
- Surface installation over holes
- Supply voltage ~220-240V
- Switch mode: on-off
- Dimmable DALI LED driver
- Steel frame, painted
- Cone in pongé fabric and light covering in jersey

kg 18 m³ 1.06

Product code composition

SKIRT / with upward and downward lighting / diffuser INCLUDED / DRIVER INCLUDED



| Type | Article | Exterior Net | Fabric Colours | Source |
|------|--------------|-----------------|----------------|---------------------------------------|
| SP | SK 100 2 LED | NE black net | BC white | LED 98W - diffused beam 3000K*, 4000K |
| | | XX no black net | AR orange | |
| | | | BL blue | |
| | | | GR light grey | |
| | | | RS red | |
| | | | VE light green | |



CE IP20 CRI90 **LED** ~10719 lm* 109 lm/W* 110-240VAC
example composition code **SP SK1002LED NE BC**

Equivalent Sound Absorption Area (A) in m² per lamp

| FREQUENCY | 125 HZ | 250 HZ | 500 HZ | 1000 HZ | 2000 HZ | 4000 HZ | 8000 HZ | 125-8000 HZ | 500-2000 HZ |
|-----------|--------|--------|--------|---------|---------|---------|---------|-------------|-------------|
| A | 0,32 | 1,17 | 1,58 | 1,81 | 1,98 | 2,21 | 3,31 | 1,77 | 1,79 |

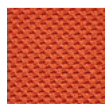
Equivalent Sound Absorption Area (A) in m² per lamp

| FREQUENCY | 125 HZ | 250 HZ | 500 HZ | 1000 HZ | 2000 HZ | 4000 HZ | 8000 HZ | 125-8000 HZ | 500-2000 HZ |
|-----------|--------|--------|--------|---------|---------|---------|---------|-------------|-------------|
| A | 0,47 | 0,98 | 1,67 | 2,23 | 2,49 | 2,78 | 4,03 | 2,09 | 2,13 |

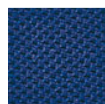
Available colors



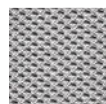
BC
White



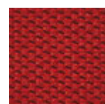
AR
Orange



BL
Blue



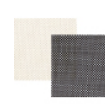
GR
Light grey



RS
Red



VE
Light green



Black net over a
white fabric NEBC

SPSK1002LED _ _ _ _

CUSTOMER _____

NOTES _____

NOTICE: Luminous flux (lm) and efficacy (lm/W) for all LED luminaires is based on nominal ratings of the LED sources. Technical data could be subject to alteration without notice. Axo Light does not provide legal guarantee for the accuracy of this data sheet.