

**SPSKR100**

Design by Manuel Vivian

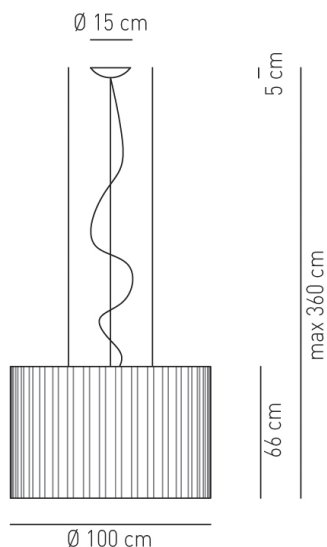
Collection of ceiling, suspended and table lamps in flame-retardant TREVIRA®CS fabric (100% polyester Glow wire 960 °C), available in several sizes and colours. The fabric can also come in a double-layer version with an exterior black net fabric.

Typology: SUSPENDED

Ratings

- E27
- Downlight and uplight
- Surface installation over holes
- Supply voltage ~220-240V
- Switch mode: on-off
- Steel frame, painted
- Cone in pongé fabric and light covering in jersey

kg 12.5 m³ 1.06

**Product code composition****SKIRT** / with upward and downward lighting / diffuser INCLUDED / DRIVER INCLUDED

Type	Article	Exterior Net	Fabric Colours	Source
SP	SKR 100 E27	NE black net	BC white	E27 4 x Max 20W LED or 4 x Max 70W halogen
		XX no black net	AR orange	
			BL blue	
			GR light grey	
			RS red	
			VE light green	



IP20 +LED

220-240V_{AC}

example composition code SP SKR100E27 XX RS

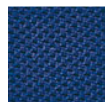
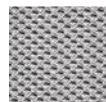
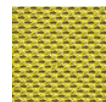
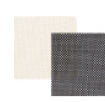
**Equivalent Sound Absorption Area (A) in m² per lamp**

FREQUENCY	125 HZ	250 HZ	500 HZ	1000 HZ	2000 HZ	4000 HZ	8000 HZ	125-8000 HZ	500-2000 HZ
A	0,30	0,56	0,89	1,22	1,33	1,56	2,78	1,23	1,15

Equivalent Sound Absorption Area (A) in m² per lamp

FREQUENCY	125 HZ	250 HZ	500 HZ	1000 HZ	2000 HZ	4000 HZ	8000 HZ	125-8000 HZ	500-2000 HZ
A	0,41	0,98	1,26	1,49	1,66	1,89	2,96	1,52	1,47

3,0

Available colorsBC
WhiteAR
OrangeBL
BlueGR
Light greyRS
RedVE
Light greenBlack net over a
white fabric NEBC

SPSKR100E27_ _ _ _

CUSTOMER_ _ _ _ _

NOTES_ _ _ _ _

NOTICE:

Luminous flux (lm) and efficacy (lm/W) for all LED luminaires is estimated based on nominal ratings of the LED sources.
Technical data could be subject to alteration without notice. Axo Light does not provide legal guarantee for the accuracy of this data sheet.