



SPSKR150

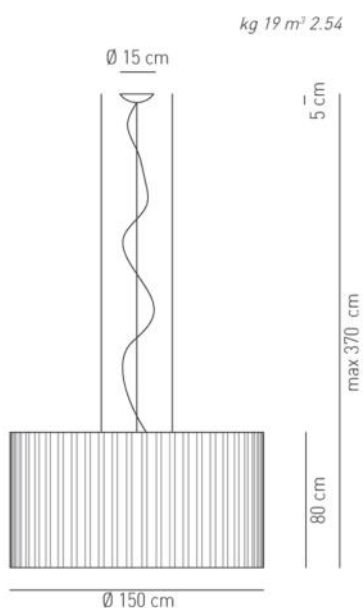
Design by Manuel Vivian

Collection of suspended lamps in flame-retardant TREVIRA®CS fabric (100% polyester Glow wire 960 °C), available in several sizes and colours. The fabric can also come in a double-layer version with an exterior black net fabric.

Typology: SUSPENDED

Ratings

- Built in **LED** module
- CCT 3000 K
- Downlight and uplight
- Surface installation over holes
- Supply voltage ~220-240V
- Switch mode: on-off
- Dimmable DALI LED driver
- Steel frame, painted
- Cone in pongé fabric and light covering in jersey



Product code composition

SKIRT / with upward and downward lighting / diffuser INCLUDED / DRIVER INCLUDED

Type	Article	Exterior Net	Fabric Colours	Source
SP	SKR 150 LED	NE black net	BC white	LED 98W – diffused beam 3000K*, 4000K
		XX no black net	AR orange	
			BL blue	
			GR light grey	
			RS red	
			VE light green	



IP20 CRI90



LED

~10719 lm* 109 lm/W*

110-240VAC

example composition code SP SKR150LED NE BC

Equivalent Sound Absorption Area (A) in m² per lamp



FREQUENCY	125 HZ	250 HZ	500 HZ	1000 HZ	2000 HZ	4000 HZ	8000 HZ	125-8000 HZ	500-2000 HZ
A	1,23	1,87	2,51	3,22	3,38	3,51	4,39	2,87	3,04

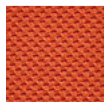
Equivalent Sound Absorption Area (A) in m² per lamp

FREQUENCY	125 HZ	250 HZ	500 HZ	1000 HZ	2000 HZ	4000 HZ	8000 HZ	125-8000 HZ	500-2000 HZ
A	1,45	1,98	2,67	3,42	3,51	3,79	4,68	3,07	3,20

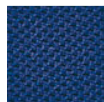
Available colors



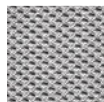
BC
White



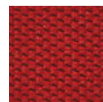
AR
Orange



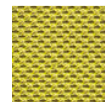
BL
Blue



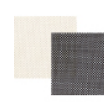
GR
Light grey



RS
Red



VE
Light green



Black net over a
white fabric NEBC

SPSKR150LED _ _ _ _

CUSTOMER _____

NOTES _____

NOTICE:

Luminous flux (lm) and efficacy (lm/W) for all LED luminaires is based on nominal ratings of the LED sources. Technical data could be subject to alteration without notice. Axo Light does not provide legal guarantee for the accuracy of this data sheet.