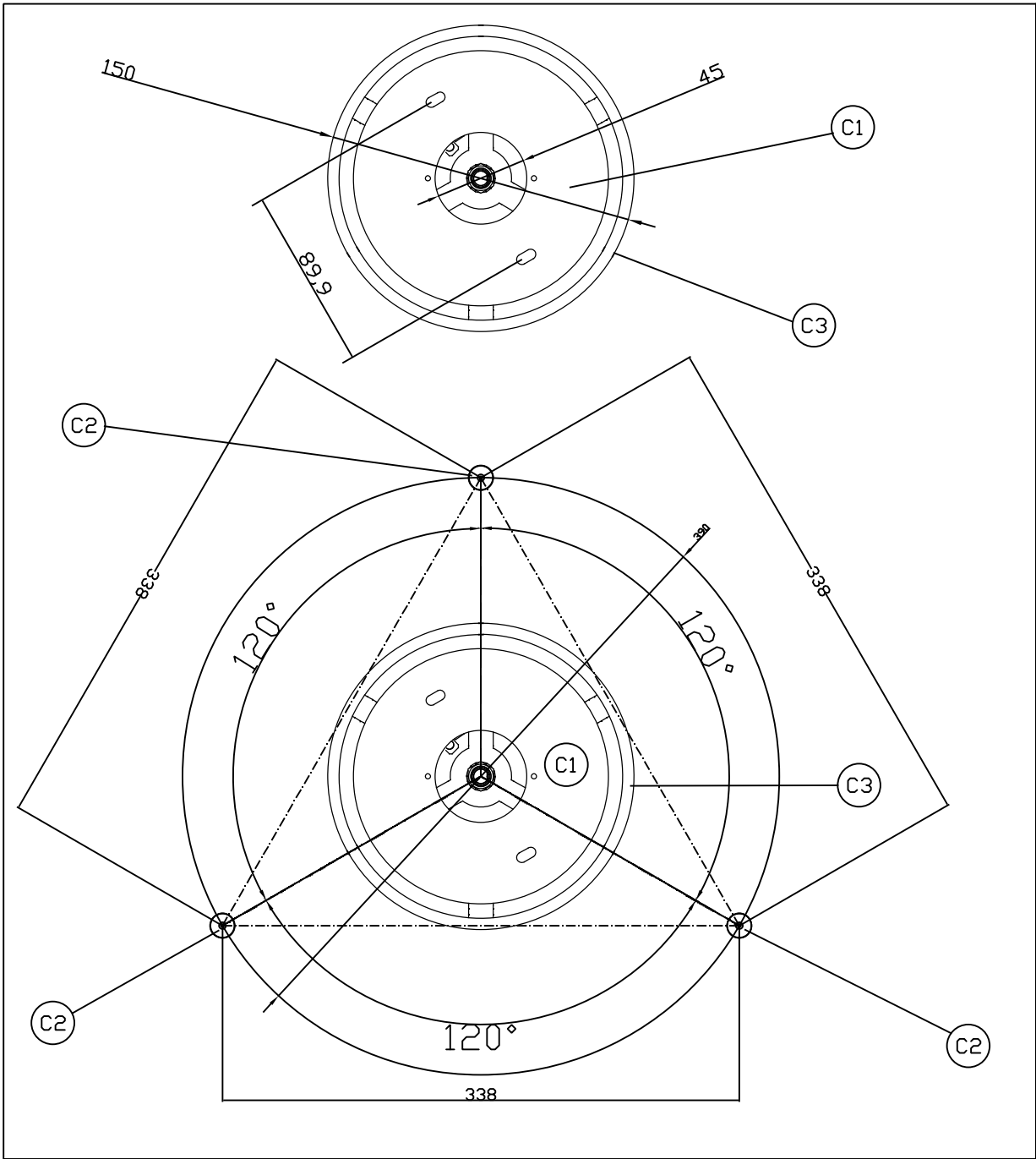
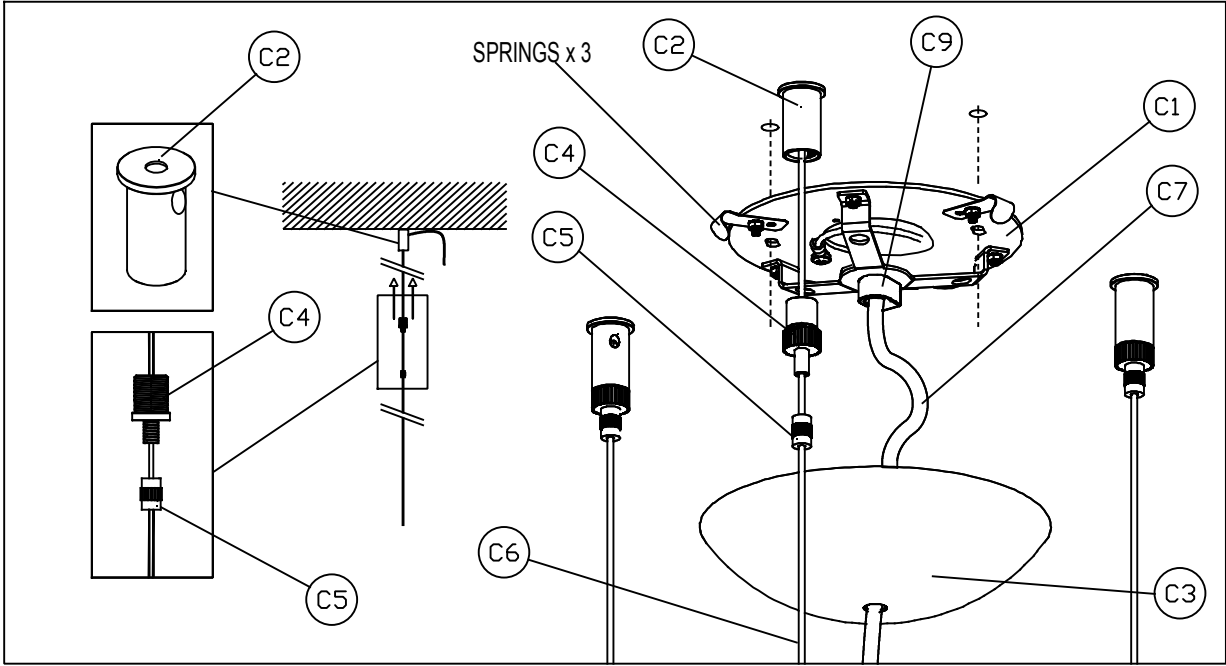
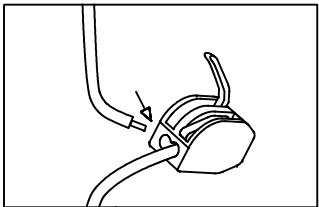


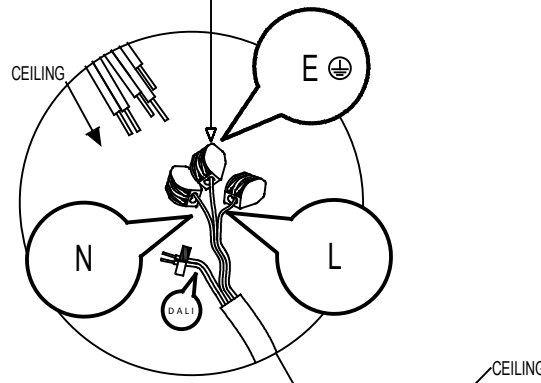
<div>ISTRUZIONI PER IL MONTAGGIO</div> <div>INSTALLATION INSTRUCTION</div> <div>INSTRUCTIONS DE MONTAGE</div> <div>INSTRUCCIONES PARA EL MONTAJE</div>	<div>Axolight</div>	<div>MODEL</div> <div>SPBEL118LEDXXXX</div> <div>Pag. 02 of 03</div>	
<div>- LEGGERE LE ISTRUZIONI GENERICHE <div>PAG. I</div> PER</div> <div>L'INSTALLAZIONE DI TUTTI GLI APPARECCHI D'ILLUMINAZIONE.</div> <div>- READ GENERAL INSTRUCTIONS <div>PAG. I</div> FOR INSTALLING</div> <div>ALL LIGHTS.</div>		<div><div>CE</div><div><div><div></div><div></div></div><div>dimmbable</div><div>DALI</div></div><div><div></div></div></div> <div><div><div></div></div></div>	
<div>(I) ACCERTARSI CHE LA SUPERFICIE D'INSTALLAZIONE SIA ADEGUATA ALL'APPARECCHIO E NE SOPPORTI IL PESO - FISSARE I COMPONENTI (C2) AL SOFFITTO CON ADEGUATE VITI - FISSARE IL (C1) AL SOFFITTO CON ADEGUATE VITI - INSERIRE I (C6) ATTRAVERSO I (C 5-C4-C2) E REGOLARE ADEGUATAMENTE LA MISURA PREMENDO E FISSANDO I (C5) - INSERIRE IL (C7) NEL (C3) E NEL (C9) - ESEGUIRE ADEGUATO COLLEGAMENTO ELETTRICO - REGOLARE ADEGUATAMENTE LA LUNGHEZZA DEL (C7) CON IL (C9) - FISSARE IL (C3) AL (C1) CON LE MOLLE - FISSARE CON ATTENZIONE IL (C11) AL (C8) TRAMITE I (C10) CON FORZA ADEGUATA. IL (C11) PUO' ESSERE RIMOSSO DAL (C8) TRAMITE LE (C10).</div>		<div>EELc: UE 874/2012 munito di lampade LED integrate, non sostituibili / contain built in LED lamps that cannot be changed: A, A+, A++</div>	
<div>(GB)ENSURE THAT THE CEILING WHERE THE FITTING IS BEING INSTALLED IS SUITABLE FOR IT AND SUPPORTS ITS WEIGHT - FIX THE COMPONENTS (C2) TO THE CEILING WITH SUITABLE SCREWS - FIX THE(C1) TO THE CEILING WITH SUITABLE SCREWS - INSERT (C6) THROUGH THE (C5-C4-C2) AND ADJUST ADEQUATELY THE MEASURE FIRST PUSHING AND THEN TIGHTENING THE PARTS (C5) - INSERT THE (C7) IN THE (C3) AND (C9) - MAKE A SUITABLE ELECTRICAL CONNECTION - ADJUST ADEQUATELY THE MEASURE OF THE (C7) USING (C9) - FIX THE (C3) TO THE (C1) BY SPRINGS - FIX WITH ATTENTION THE (C11) TO THE (C8) USING (C10) WITH SUITABLE STRENGTH. (C11) CAN BE REMOVED FROM THE (C8) REMOVING THE (C10).</div>		<div><div>ATTENZIONE: MANEGGIARE LE STRUTTURE (8) E (11) CON LA MASSIMA CAUTELA</div><div>ATTENTION: MOVE THE STRUCTURES (8) AND (11) WITH THE MOST CAUTION.</div><div>ATTENTION: MANIPULER LE STRUCTURES (8) ET (11) AVEC TRES GRAND PRUDENCE.</div></div>	
<div>- RIMUOVERE LE PELLICOLE PRIMA DELL'USO</div> <div>- REMOVE COVER BEFORE USING UNIT</div> <div>- ELIMINER LA PROTECTION AVANT L'USAGE</div>		<div>TECHNICAL DATA</div> <div>SIZE: Hmax.365 cm, D .118 cm.</div> <div>SOURCES:</div> <div>LED 98 W</div> <div>DIMMABLE DALI</div>	



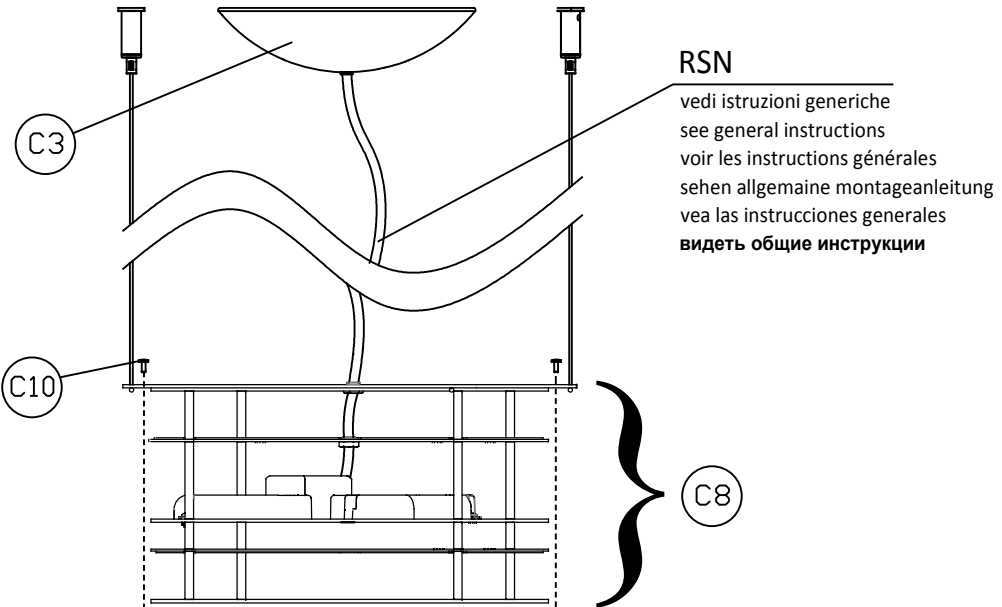
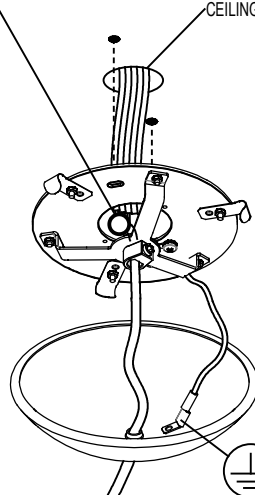
COLLEGAMENTO
ELETTRICO



ELECTRICAL
CONNECTION



E	Verde/green/grün/ vert/verde/Зелёный
L	Marrone/brown /braun/brun /marròn/Коричне
N	Blu/blue /blau/blue /azul/Синий
DALI	D1 WHITE D2 RED



C11

